

**Nokia Customer Care  
6235/6235i/6236i (RM-60)  
Mobile Terminals**

# **Disassembly/Assembly**

<b>Contents</b>	<b>Page</b>
Safety Information .....	3
ESD Protection.....	3
Assembly Instructions .....	4
Disassembly Instructions.....	4
1. Prepare the phone .....	4
2. Remove the Battery Cover (C-cover) .....	4
3. Remove the A-cover .....	5
4. Place Protective Film .....	5
5. Remove the Screws .....	6
6. Remove the PWB Assembly .....	6
7. Separate the LCD Display from the PWB .....	7
8. Remove the Earpiece .....	7
9. LCD Display Disassembly .....	8
10. Remove the Camera from PWB .....	8
11. Remove the Volume Key .....	9
12. Remove the Vibra, Microphone, and DC Jack .....	9
13. Remove the UHJ Sliding Cover .....	10
14. Remove the Power Key .....	10
15. Remove the Infrared Lens .....	11
16. Remove the Antenna/IHF Speaker .....	11
17. Remove the SIM Cover .....	12

## Safety Information

Adhere to the following guidelines when assembling and disassembling the phone.

- **QUALIFIED SERVICE**  
Only qualified personnel may install or repair phone equipment.
- **ACCESSORIES AND BATTERIES**  
Use only approved accessories and batteries. Do not connect incompatible products.
- **CONNECTING TO OTHER DEVICES**  
When connecting to any other device, read its user's guide for detailed safety instructions. Do not connect incompatible products.

## ESD Protection

Nokia requires that phone repair centers have sufficient ESD protection against static electricity when servicing cellular phones. Use the following guidelines:



- A cellular phone that is ready for use can be handled normally without ESD protection. The battery can be replaced in normal conditions of use.
- Use ESD protection when replacing a color cover, except for the phone covers which can be replaced by the customer.
- All electronic parts of the phone, including the display, are susceptible to ESD. Resistors also can be damaged by static electricity discharge.
- All ESD-sensitive parts must be packed in metallized protective bags during shipping and handling outside any ESD Protected Area (EPA).
- Every repair action involving opening the phone or handling the phone components must be done under ESD protection.
- ESD-protected spare part packages **MUST NOT** be opened/closed outside an EPA.

For more detailed information about ESD protection and EPAs, contact your local Nokia Customer Care representative.

## Assembly Instructions

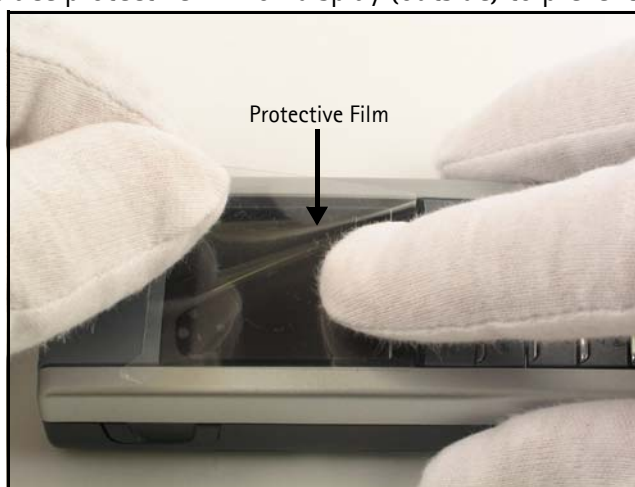
To assemble the mobile terminal, follow the "[Disassembly Instructions](#)" in reverse order.

## Disassembly Instructions

Use the following steps to disassemble the phone.

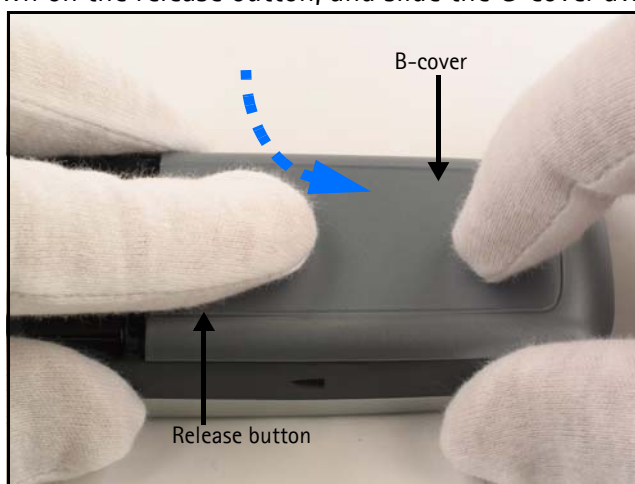
### 1. Prepare the phone

- A. Turn the phone off.
- B. Gently place protective film on display (outside) to prevent scratches.



### 2. Remove the Battery Cover (C-cover)

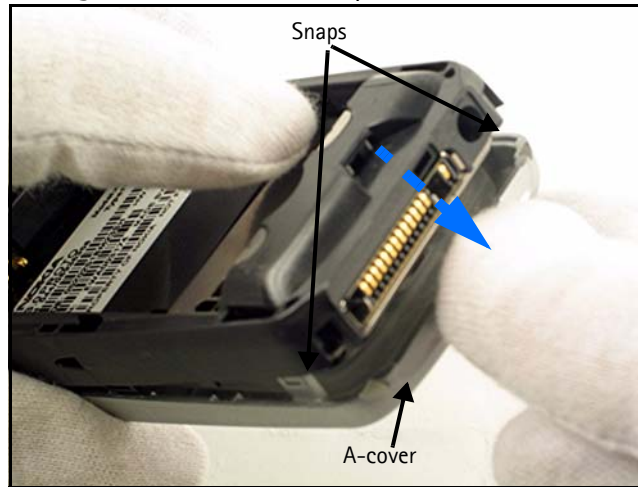
- A. Push down on the release button, and slide the C-cover away from the phone.



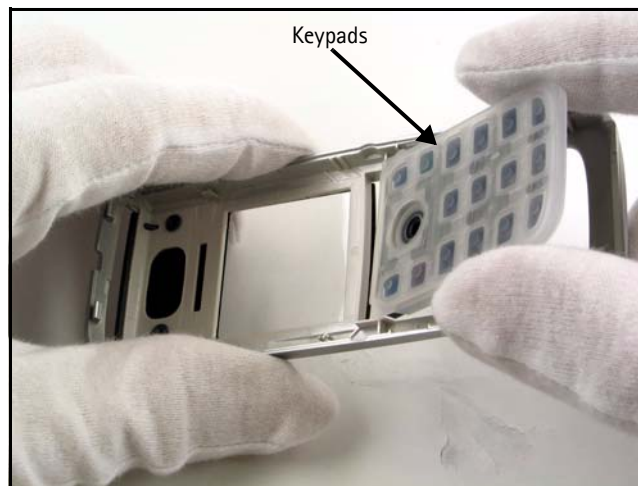
- B. Remove the battery.

### 3. Remove the A-cover

Rotate A-Cover from the face of phone and remove. Be careful of the header cap and retaining snaps along either side and at top.

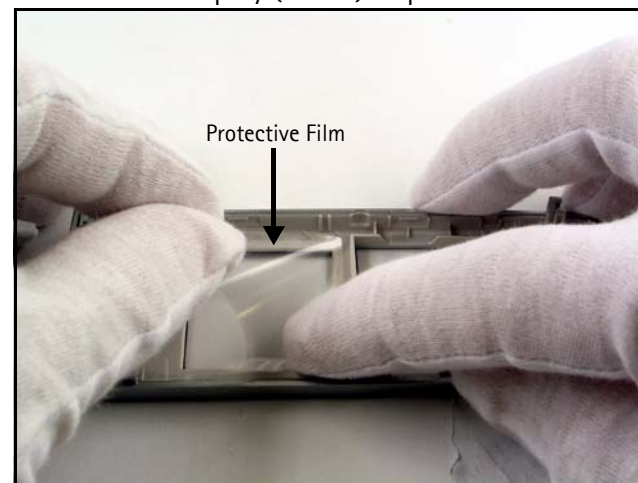


Notice the keypad does not self-retain within the A-cover and is easily lifted from position.



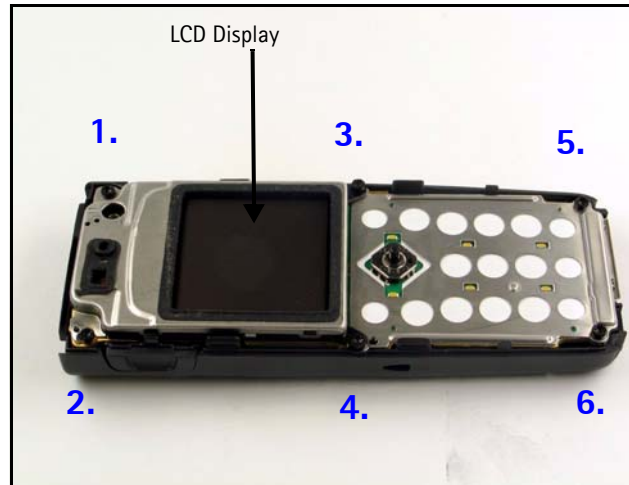
### 4. Place Protective Film

Place protective film on the display (inside) to prevent scratches.



## 5. Remove the Screws

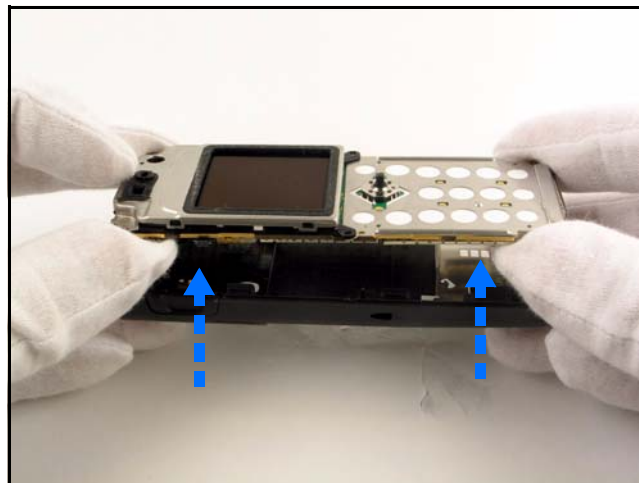
A. Use a screwdriver to remove the six Torx screws, in the order shown, to free the UI module.



B. Place protective film on the LCD display to prevent scratches.

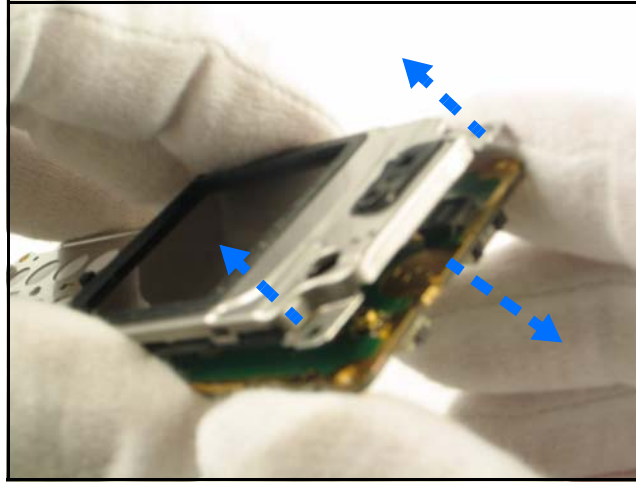
## 6. Remove the PWB Assembly

Carefully lift the PWB assembly off the B-cover. Be sure not to damage the camera and battery connectors.



## 7. Separate the LCD Display from the PWB

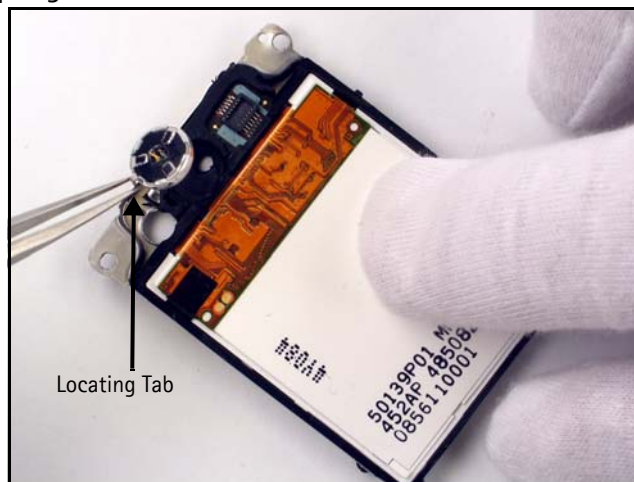
Gently lift the LCD display off of the PWB. Be careful of the attachment point, since it is the only fixed mounting point for this assembly once the six Torx screws have been removed.



Hint: Use a pair of tweezers to gently pry this interface apart.

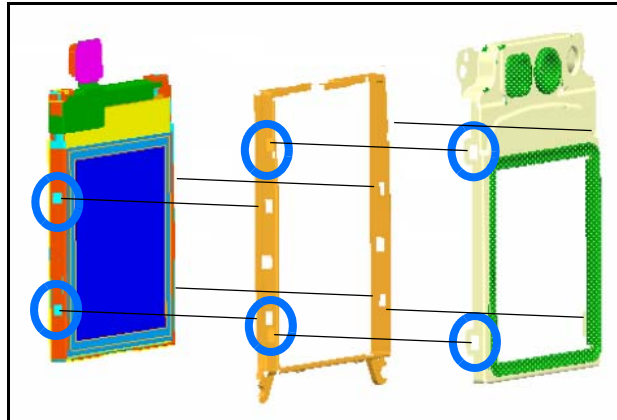
## 8. Remove the Earpiece

Use the locating tab to gently lift to remove the speaker from its mount. Be careful not to touch the spring contacts.



## 9. LCD Display Disassembly

A. Open the snaps (highlighted below) on both sides of the LCD frame using an appropriate tool.

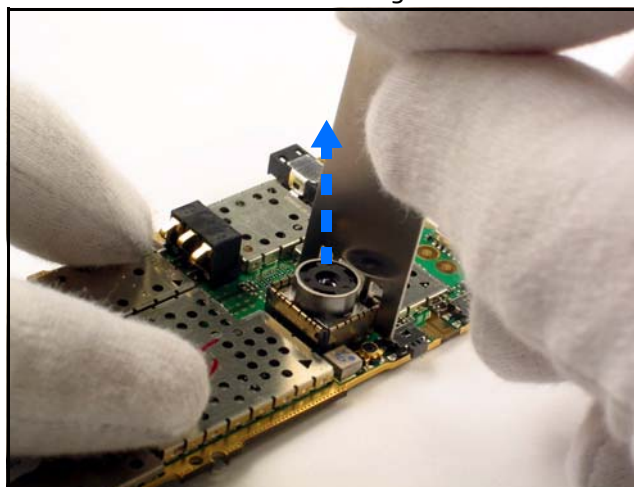


B. Gently remove frame, taking care not to damage it.

C. Gently pry the LCD shield mounting tabs to remove the shield from the LCD frame.

## 10. Remove the Camera from PWB

A. Always use Camera Removal Tool to release Camera Module. Press the tabbed end into Camera Module and release the four mounting tabs on both the top and bottom.



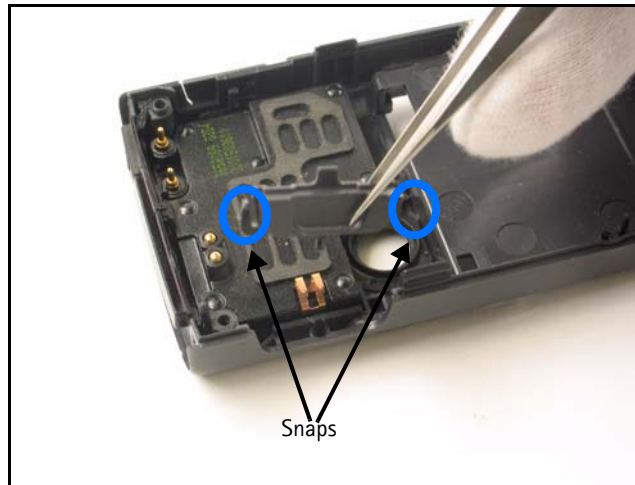
B. Use opposite end of tool to lift camera from its mount. Be careful not to damage any contacts.

Note: Remember to use the orientation tab on camera housings.



### 11. Remove the Volume Key

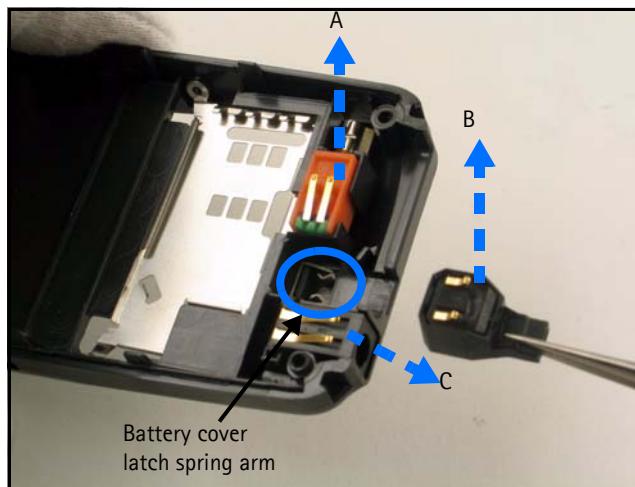
A. Applying gentle pressure, push the volume key backwards, and then lift upwards to remove from the B-Cover.



Note: The snaps on either side must clear the retainers.

### 12. Remove the Vibra, Microphone, and DC Jack

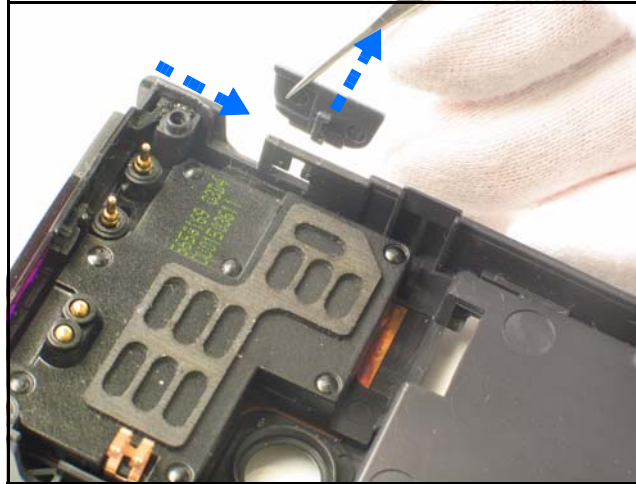
Use a tweezers to carefully remove the vibra (A), microphone (B), and DC jack (C) from the B-cover.



Note: Be aware of the battery cover latch spring arm. It might fall out, due to its placement underneath the microphone assembly.

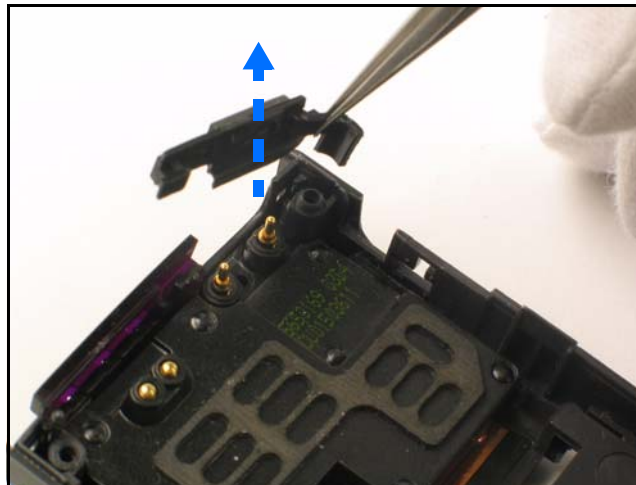
### 13. Remove the UHJ Sliding Cover

Note the sliding UHJ cover and the relative slot/tab arrangement prior to disassembly. Slide cover so that the tab lines up with the opening slot, and then use tweezers to gently pull it away from the B-Cover.



### 14. Remove the Power Key

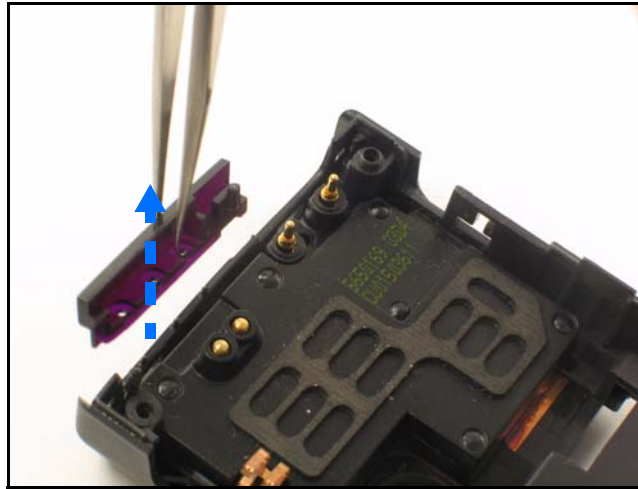
Using tweezers, gently pinch the power key by the top-right Torx screw hole and lift upwards to remove it from its mount.



Note: The other end of the power key will separate from the IR lens.

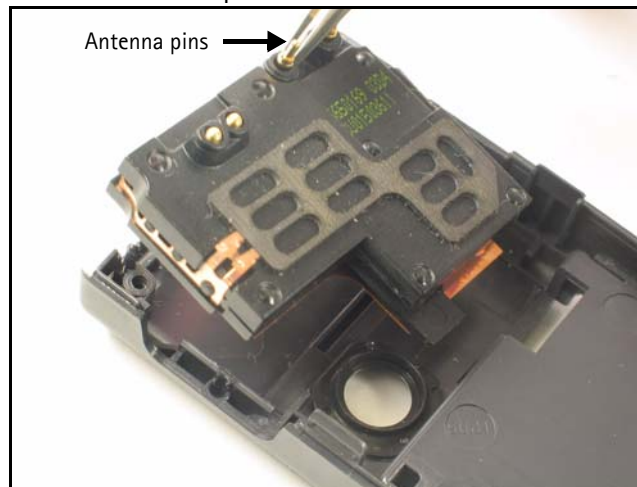
## 15. Remove the Infrared Lens

After the power key is removed, use tweezers to gently lift the infrared lens from its mount



## 16. Remove the Antenna/IHF Speaker

Using tweezers, gently pry the antenna/IHF speaker assembly from the C-Cover at the sides, top, and bottom. Once loose, you can easily pick the assembly from the hole, at the top right, between the antenna pins.



## 17. Remove the SIM Cover

- A. Grab the C-Cover so that you can open the SIM cover.
- B. Rotate the cover to reveal the inside (vs. the outside back). Gently unsnap the cover from its mounts and remove.

